

Lokawiz catalog

IoT Boards

Version 1.0



LOKAWIZ
Smart devices and smart solutions

WWW.LOKAWIZ.COM | INFO@LOKAWIZ.COM

INTRODUCTION	2
ADVANTAGES WITH LOKAWIZ	2
APPLICATIONS	2
ECOSYSTEM	3
SMART LOCATE	3
SMART WIN	3
SENSORS	3
SMART LOCATE BOARDS	4
CORE	4
2G+GNSS	4
3-4G+GNSS	4
NFC/RFID EXTENSION	5
CORE WITH BLE	5
SMART WIN BOARDS	6
Wi-Fi & BLE AP	6
Wi-Fi EP	6
BLE EP	6

Introduction

Lokawiz IoT boards provide varying capability meeting wide range of requirements in the target application. Designed using some core IC Series, it's very easy to adapt and same design can produce hardware of varying capability with high reliability and durability. Along with boards, we also offer wide range of sensors.

Advantages with Lokawiz

PLUG & PLAY COMPONENTS: Lokawiz hardware and solutions are built with specifically designed plug & play components. We have specialized design and interfaces that allows us to add, remove and replace hardware components easily. Its capable to make large types of products by their combination and configures for specific application.

MULTIPLE CONFIGURATION: Lokawiz hardware boards/devices have configuration options such as supply power, battery, battery life & measurement, micro-controller modes, on-board timer, interfaces, operating voltage levels, sensor, etc. This makes the hardware very versatile and suitable for use in various IoT applications with wide range of requirements.

WIDE RANGE OF SENSORS: Rich physical interface options to connect with add-on hardware, sensors, etc. is available. A wide range of external sensor types can be plugged in to add use case specific sensing capabilities.

FUTURE READY: The boards are upgradable and built for tough operating and environmental conditions.

Applications

Our Smart LocATe & Smart WIN Boards can be used to build IoT devices & IoT systems catering for wide range of applications helping to advance customer experience with wide range of features and benefits for safety, convenience and productivity.

- **Manufacturing and production** for tracking production, process parameters, machine surveillance & preventive maintenance, asset management, plant automation, etc.
- **Transportation, Supply Chain & Logistics** for vehicle tracking, vehicle diagnostics & maintenance, delivery route tracking, driver management, accident prevention, etc.
- **Transport and Automotive** for tracking Cars, Bikes, Autos, passenger safety, etc.
- **Utilities and Smart Grids** for wireless utility meter reading, utility asset management, fault detection, energy management devices & remote power management
- **Smart City and Infrastructure** for Building security systems, access systems, building management, etc.
- **Industrial** for Employee Tracking, Equipment and Asset Tracking, Field workers, etc.
- **Education Institutes** for tracking school bus and children, contactless attendance, etc.
- **Indoor Applications** such as Smart home network, patient tracking & monitoring, Lab asset tracking, Indoor location tracking, etc.
- **Agriculture, Farming, Husbandry** such as Farm animals tracking, ZebraNet, Earth sensing, Soil & water sensing, Smart farms, Smart greenhouse.
- **Processing Industries** Pharma, Textiles, Food Processing for monitoring environmental conditions, access restrictions, etc.
- **Consumer Applications and Devices** such as Watches, Fitness, Wellness and Sports, Consumer Medical, Remote Control, Mobile Phone Peripherals, PC Peripherals, etc.
- **Military and Commercial Applications** such as Monitoring systems of vessels/ships, Smart meters (gas, water, etc.).

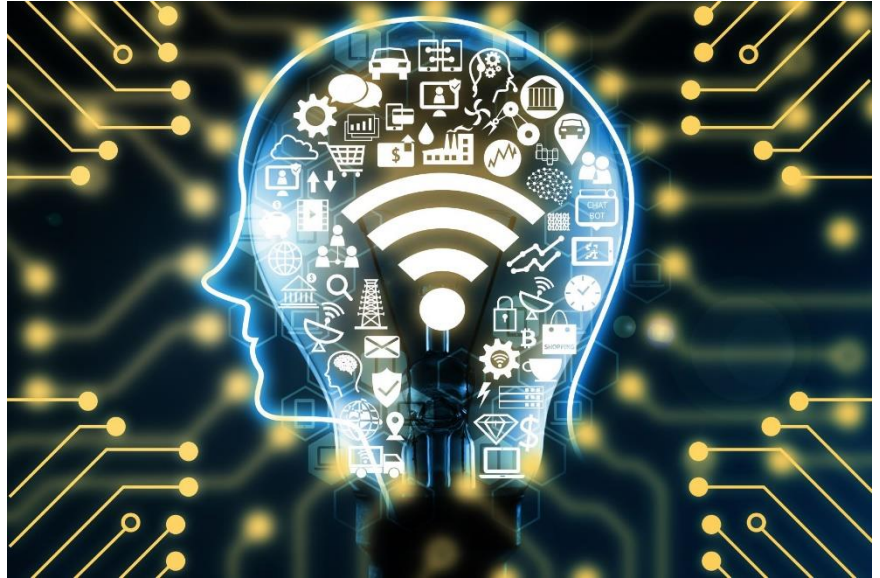
Ecosystem

Lokawiz Boards are designed for easy adaptability for wide application. With Plug & Play design it provides multiple choice of configuration with high quality and better cost control. The boards are future proof (upgradable), built for tough operating and environmental conditions.

Smart LocATe

Smart LocATe Boards consist of

- Core Board
- Cellular Connectivity Boards
 - 2G+GNSS Board
 - 3-4G + GNSS Board
- NFC/RFID Extension Board
- BLE Core Board



Smart WIN

Smart WIN Boards consist of

- General Access Point Board
- End Point Board – Wi-Fi based
- End Point Board – BLE based

Sensors

Lokawiz IoT Boards support a rich variety of sensors types, some of them are as below and more. The sensors can be easily added to extend monitoring and additional functions in the end IoT applications.



Magnetic Hall



Hall Current



Inductive Switch



Temperature



Humidity



Moisture



Pressure



Proximity



Touch



Accelerometer



Gyroscope



Vibration



Location



Position



Battery Level



Fluid Flow



Gas



Flame/Smoke



Light-to-Digital



PIR

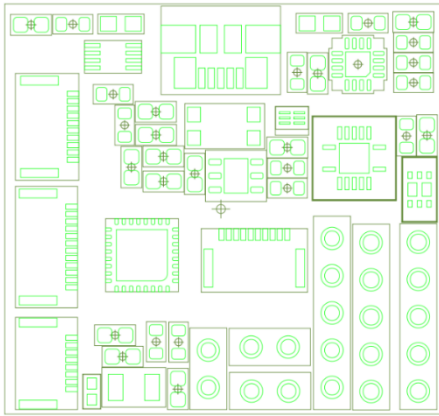


Sound Intensity

Smart LocATe Boards

Core

LW-BSLAT-CORE



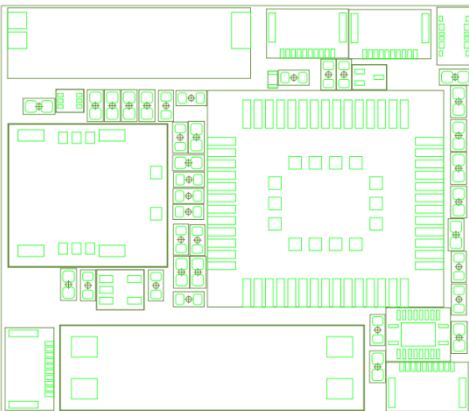
CORE MCU BOARD WITH EXTENSION INTERFACES

Production grade board that is adaptable with range of configurations, scalable with rich interfaces and peripherals and has capability options for developing optimum fit future ready devices at competitive price.

- Compact size, ON-OFF switch, charging module, etc.
- Selectable version for better quality and cost fit.
- Rich peripheral interfaces features extensions.
- Standard interfaces for sensors and other hardware.
- Configuration options for wide range of applications.
- Rich & easy ARM based development options.
- Encryption option for security in select version.

2G+GNSS

LW-BSLAT-2GGN



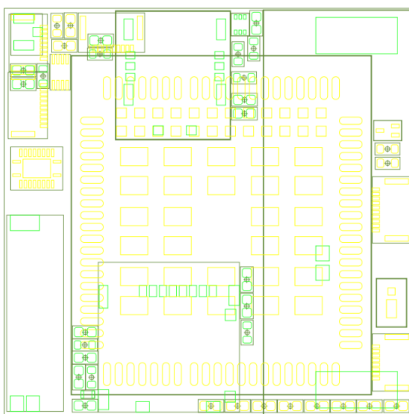
STANDALONE/EXTENSION BOARD WITH 2G & GNSS

Multi-type board with GSM, GNSS that can be further extended with Bluetooth, sensors and other peripheral to cater to wide range of tracking applications and can be used either with core board or in standalone mode.

- High quality cellular & tracking module and antennas.
- Small CPU for light applications in standalone.
- High quality onboard antennas for quality reception.
- Rich peripheral interfaces features extensions.
- Standard interfaces for sensors and other hardware.
- Bluetooth extension option for addition needs.

3-4G+GNSS

LW-BSLAT-4GGN



STANDALONE/EXTENSION BOARD WITH 3G/4G & GNSS

Multi-type board with cellular and tracking module with options for add-on network, peripherals & sensors. Usable in peripheral or standalone mode in a wide range of tracking applications.

- High quality cellular, tracking and antenna modules.
- Cellular versions selections for better app & cost fit.
- Additional CPU for applications in standalone.
- Rich peripheral interfaces features extensions.
- Standard interfaces for sensors and other hardware.
- Support most IP protocols for rich applications.
- Most GNSS tracking support for wide coverage.

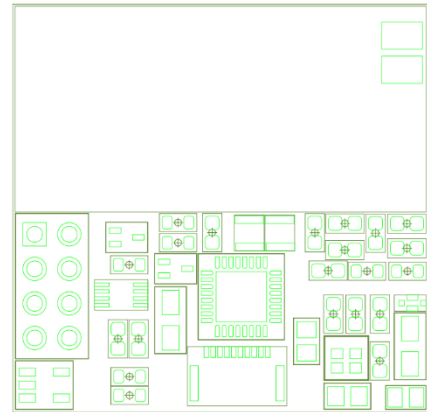
NFC/RFID Extension

PERIPHERAL EXTENSION WITH NFC/RFID

LW-BSLAT-NFRF

Peripheral board to add NFC/RFID capability with high quality antenna and configuration options for use in different applications.

- *Interface compatible with core board.*
- *High sensitivity on board NFC antenna.*
- *Support wide range of common tags.*
- *Two version options with different application.*
- *Interface configurations modes.*
- *Power and reset configuration options.*
- *Card emulation mode and version.*



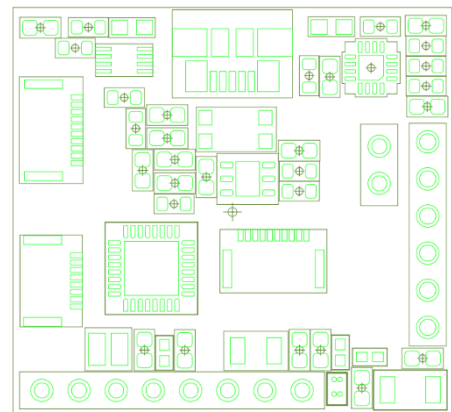
Core with BLE

CORE MCU BOARD WITH BLE

LW-BSLAT-CBLE

Production grade board similar to the core but with BLE and fixed MCU capability with configuration options and is scalable with rich interfaces and peripherals to support a range of low power applications.

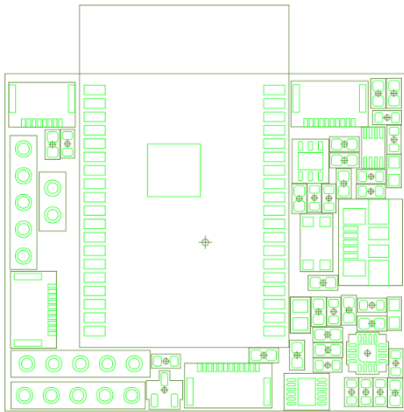
- *Compact size, ON-OFF switch, charging module, etc.*
- *Selectable basic and advance MCU & BLE versions.*
- *High gain & sensitivity onboard Bluetooth antenna.*
- *Rich interfaces for sensors and add-on hardware.*
- *Configurations suitable for low power applications.*
- *Rich & easy ARM based development options.*
- *Multiple encryption options for secure applications.*



Smart WIN Boards

Wi-Fi & BLE AP

LW-BSWIN-WBAP



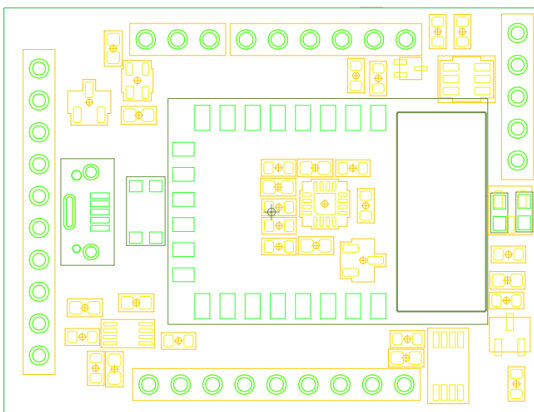
MULTIPURPOSE ACCESS POINT WITH WI-FI & BLE

Production grade board similar to Smart LocATe Core with BLE and Wi-Fi network connectivity, scalable with rich interfaces & peripherals and can support a wide range of applications with easy programming options.

- Compact size, ON-OFF switch, charging module, etc.
- Selectable for onboard or extension antenna.
- Rich peripheral interfaces features extensions.
- Wi-Fi, Bluetooth & BLE programming configuration.
- Standard interfaces for sensors and other hardware.
- Easy Linux or Windows based development.
- Wide range of encryption options for security.

Wi-Fi EP

LW-BSWIN-WIEP



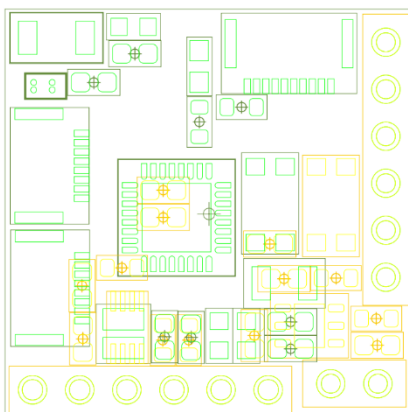
STANDALONE END POINT WITH WI-FI

Production grade standalone board with Wi-Fi network connectivity, range of configuration options, support range of sensors that will make end point devices capable for a very wide range of edge IoT application.

- Compact size, ON-OFF switch, charging, etc.
- Battery monitoring for end point applications.
- Configuration options for wide range of applications.
- Battery and power configuration & control options.
- Standard interfaces for sensors and other hardware.
- Easy Linux or Windows based development.
- Multiple encryption options for security.

BLE EP

LW-BSWIN-BLEP



STANDALONE END POINT WITH BLE

Production grade standalone board with BLE connectivity, range of configuration options, support for range of sensors that will make end point devices capable for a very wide range of edge IoT application.

- Compact size, ON-OFF switch, charging, etc.
- Selectable basic and advance MCU & BLE versions.
- High gain & sensitivity onboard Bluetooth antenna.
- Battery monitoring, configuration & power control.
- Standard interfaces for sensors and other hardware.
- Rich & easy ARM based development options.
- Multiple encryption for secure applications.

For detail specification of the boards reach out to Lokawiz team via email to info@lokawiz.com.

Copyright © [Lokawiz](#)

